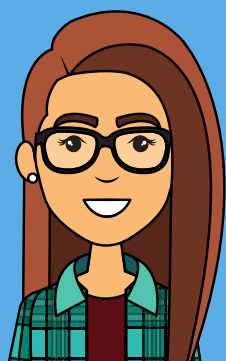




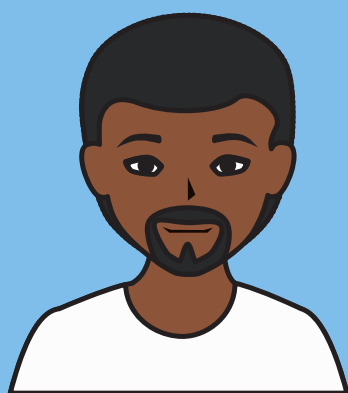
WANTED!

POLL WORKERS!



WHO?

Our democracy needs younger people – 16 to 50 – who are less vulnerable to Covid-19 to step up to staff the polls. Most poll workers are retirees, 65+. That's too dangerous this year.



WHY?

This fall, when turnout is expected to be at an all-time high, poll workers will be the difference between hours-long lines and a humane voting experience.



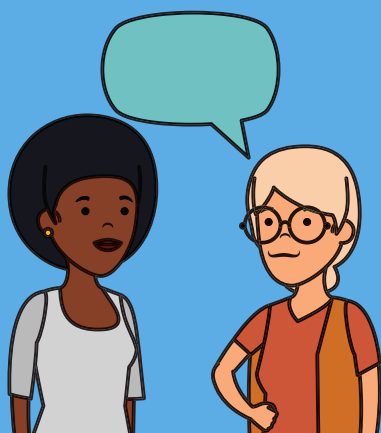
WHAT?

The hours are long (~6:00 a.m. to well after polls close at 8:00 pm) but it's paid work (the hourly rate varies by jurisdiction), and the contribution to our democracy is priceless. You'll have training to prepare you for the role.



HOW?

To volunteer in Washtenaw County, sign up at tinyurl.com/WashCoPollWorker. To go further afield in Michigan, wherever the need is greatest, you can find everything you need to know at mi.gov/DemocracyMVP.



TELL OTHERS

Recruit your friends to volunteer as poll workers and help save American democracy.

washtenawdems.org

